

## Accommodation for WCH Tokyo25 – Media/RHB

### For Media/RHB

The LOC will prepare several hotels for RHB/Media in Shinjuku and Ikebukuro areas. From these hotels, guests can easily access to Japan National Stadium by public transportation.

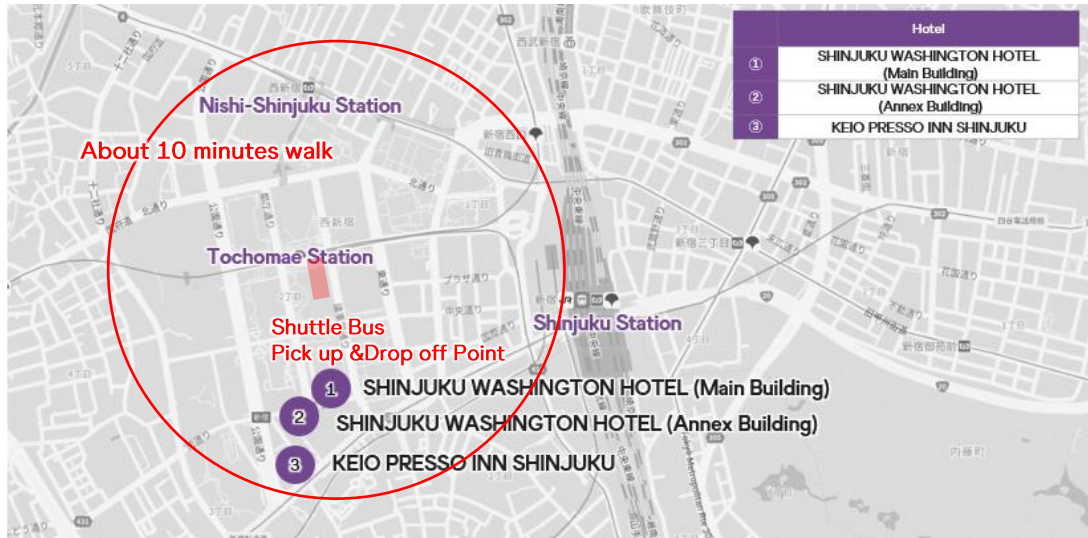
Approximately six months before WCH, normal booking will begin through the EMS.

Hotel		SHINJUKU WASHINGTON HOTEL (Main Building)	SHINJUKU WASHINGTON HOTEL (Annex Building)	KEIO PRESSO INN SHINJUKU	TOYOKO INN TOKYO IKEBUKURO KITA-GUCHI No.1	TOYOKO INN TOKYO IKEBUKURO KITA-GUCHI No.2
Area		Shinjuku	Shinjuku	Shinjuku	Ikebukuro	Ikebukuro
Group		A Plus		B		
Star		3				
Re- main- ing ava- ila- ble room count as of 18 APR	Single	40-65 (10-21 Sep)	50-83 (10-21 Sep)	47-66 (5-21 Sep)	14-64 (5-21 Sep)	18-99 (5-21 Sep)
	Double	-	-	-	0	0
	Twin	6 (11-21 Sep)	-	-	0	0
Dis- tances	Tokyo Int'l Airport	25 km / 35-40 min	25 km / 35-40 min	25 km / 40-45 min	30 km / 65-70 min	30 km / 65-70 min
	Narita Int'l Airport	85 km / 90-100 min	85 km / 90-100 min	85 km / 95-105 min	85 km / 100-110 min	85 km / 100-110 min
	Competition Venue (bus)	5 km / 30 min	5 km / 30 min	5 km / 30 min	10 km / 60 min	10 km / 60 min
	Competition Venue (train)	5 km / 20 min	5 km / 20 min	5 km / 20 min	10 km / 30 min	10 km / 30 min
	Oi Central Seaside Training Venue (train)	20 km / 60 min	20 km / 60 min	20 km / 60 min	25 km / 65 min	25 km / 65 min
	Tokyo University Training Venue (train)	15 km / 45 min	15 km / 45 min	15 km / 45 min	15 km / 40 min	15 km / 40 min
Parking		Ⓟ (2,000 ¥/day)	Ⓟ (2,000 ¥/day)	Ⓟ (1,000 ¥/day)	Ⓟ (2,000 ¥/day)	Ⓟ (2,000 ¥/day)
Web site		<a href="#">Website</a>	<a href="#">Website</a>	<a href="#">Website</a>	<a href="#">Website</a>	<a href="#">Website</a>

Ⓟ The hotel does not own a parking lot, but there is a public parking area nearby that guests may consider using.

## Map

### Shinjuku Area



### Ikebukuro Area (Group B Hotels)



The pick-up and drop off points for media shuttle bus will be located within 10min walk from each media hotels as above map. The bus stops will feature the logo of World Athletics Championships 2025.

## Booking Deadline & Payment - Cancellation Policy

### Group A Plus Hotels

Hotels	Area	Booking Deadline	Payment Policy (% to be paid)	Cancellation Policy (% to be paid)
SHINJUKU WASHINGTON HOTEL (Main Building)	Shinjuku	15 May 2025	Until 22 May 2025: 100%	From 31 Mar 2025 to 28 May 2025: 90%
SHINJUKU WASHINGTON HOTEL (Annex Building)	Shinjuku			From 29 May 2025: 100%
Rooms Blocked for: 10 – 21 Sep 2025				

### Group B Hotels

Hotels	Area	Booking Deadline	Payment Policy (% to be paid)	Cancellation Policy (% to be paid)
KEIO PRESSO INN SHINJUKU	Shinjuku	8 Jul 2025	Until 15 Jul 2025: 100%	From 22 Jul to 7 Aug 2025: 20%
TOYOKO INN TOKYO IKEBUKURO KITA-GUCHI No.1	Ikebukuro			From 8 to 19 Aug 2025: 80%
TOYOKO INN TOKYO IKEBUKURO KITA-GUCHI No.2	Ikebukuro			From 20 Aug 2025: 100%
Rooms Blocked for: 5 – 21 Sep 2025				



## SHINJUKU WASHINGTON HOTEL (Main Building) (Group A Plus)



Shinjuku Washington Hotel is conveniently located in the center of skyscrapers in Shinjuku, next to the Tokyo Metropolitan Government Building. About a 5-minute walk to Tochomae Station, and 10-minute ride to Kokuritsu Kyogijo (National Stadium) Subway Station.

All rooms are equipped with free Wi-Fi and equipment/facilities including microwaves, a laundry room, a convenience store will offer a convenient and comfortable stay.

### Hotel Capacity:

Total: 1,280 rooms

### Room Types Available for Media:

- Single Rooms (13m<sup>2</sup>) : from 10 Sep – 21 Sep 2025
- Double / Twin Rooms (19.5m<sup>2</sup>) : from 11 Sep – 21 Sep 2025

**BOOKING DEADLINE: 15 May 2025**



### Facilities:

- Laundry Facilities, Self-Operated Lockers, Microwave Oven, Restaurant, Convenience Store, etc.

### Dining:

- Breakfast (Manhattan Table Grill & Dining: 25 F) 06:30-10:30 (LO 10:00)
- \*Breakfast venue is subject to change.

### Nearby Parking:

- Times Parking (Shinjuku Washington Hotel Building)
- 160 parking lots
- Max. Height: 2.1m
- Parking Fee: 2,000 JPY / night (tax included, as of 21 Nov 2024)

Check-in: 14:00

Check-out: 11:00

Early Check-in	Before 14:00: 100% of one night
Late Check-out	After 11:00: 100% of one night

### Distances:

From / To	Distance (km)	Journey Time (min)
Tokyo International Airport	25	35-40
Narita International Airport	85	90-100
Competition Venue (by bus)	5	30
Competition Venue (by train)	5	20
Oi Central Seaside Training Venue (by train)	20	60
Tokyo University Training Venue (by train)	15	45



## SHINJUKU WASHINGTON HOTEL (Annex Building) (Group A Plus)



Shinjuku Washington Hotel is conveniently located in the center of skyscrapers in Shinjuku, next to the Tokyo Metropolitan Government Building. About a 5-minute walk to Tochomae Station, and 10-minute ride to Kokuritsu Kyogijo (National Stadium) Subway Station.

All rooms are equipped with free Wi-Fi and equipment/facilities including microwaves, a laundry room, a convenience store will offer a convenient and comfortable stay.

### Hotel Capacity:

Total: 337 rooms

### Room Types Available for Media:

- Single Rooms (15.5m<sup>2</sup>) : from 10 Sep – 21 Sep 2025

**BOOKING DEADLINE: 15 May 2025**

### Facilities:

- Laundry Facilities, Self-Operated Lockers, Microwave Oven, etc.

### Dining:

- Breakfast (Steak Shabu-shabu Fujita: 1F) 07:00-10:30 (LO 10:00)

\*Breakfast venue is subject to change.



### Nearby Parking:

Times Parking Shinjuku Washington Hotel Building

- 160 parking lots
- Max. Height: 2.1m
- Parking Fee: 2,000 JPY / night (tax included, as of 21 Nov 2024)

**Check-in: 14:00**

**Check-out: 11:00**

Early Check-in	Before 14:00: 100% of one night
Late Check-out	After 11:00: 100% of one night

### Distances:

From / To	Distance (km)	Journey Time (min)
Tokyo International Airport	25	35-40
Narita International Airport	85	90-100
Competition Venue (by bus)	5	30
Competition Venue (by train)	5	20
Oi Central Seaside Training Venue (by train)	20	60
Tokyo University Training Venue (by train)	15	45





## KEIO PRESSO INN SHINJUKU (Group B)



A 8-minute walk to Tochomae Subway Station, and 10-minute ride to Kokuritsu Kyogijo (National Stadium) Subway Station. All rooms are equipped with free internet access, refrigerator, air purifier with humidifying, etc. Hotel facilities include microwave oven, a laundry room, etc and a convenience store is also accessible directly from the hotel.

### Hotel Capacity:

Single Rooms: 337, Double / Twin Rooms: 21, **Total: 358 rooms**

### Room Types Available for Media:

- Single Rooms (12m<sup>2</sup>) : from 5 Sep – 21 Sep 2025

**BOOKING DEADLINE: 8 Jul 2025**

### Facilities:

- Laundry Facilities, Self-Operated Lockers, Convenience Store, etc.

### Dining:

- Breakfast (Dining Hall) 06:30-09:30 (LO 09:15)

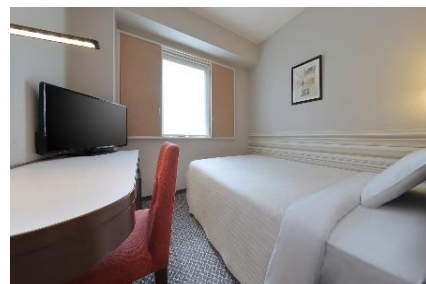
### Nearby Parking:

Public Parking (Keio Plaza Hotel)  
- 509 parking lots  
- Max. Height: 2.1m  
- Parking Fee: 1,000 JPY / night (tax included, as of 21 Nov 2024)

**Check-in: 15:00**

**Check-out: 10:00**

Early Check-in	Before 15:00: 100% of one night
Late Check-out	After 10:00: 100% of one night



### Distances:

From / To	Distance (km)	Journey Time (min)
Tokyo International Airport	25	40-45
Narita International Airport	85	95-105
Competition Venue (by bus)	5	30
Competition Venue (by train)	5	20
Oi Central Seaside Training Venue (by train)	20	60
Tokyo University Training Venue (by train)	15	45



## TOYOKO INN TOKYO Ikebukuro KITA-GUCHI No.1 (Group B)



The hotel offers simple, clean and comfortable rooms. As a part of hotel chain, facilities and quality of services are standardized. Located within 4-minute walk from JR Ikebukuro Station. Free WIFI is available in all rooms and lobby. Hotel facilities include microwave, laundry room, etc.  
In honor of the area as "Ikebukuro Chinatown", the hotel's breakfast even offers Chinese cuisine.

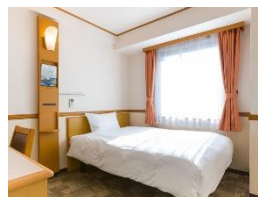
### Hotel Capacity:

Single Rooms: 158, Double / Twin Rooms: 65, **Total: 223 rooms**

### Room Types Available for Media:

- Single Rooms (11m<sup>2</sup>) : from 5 Sep – 21 Sep 2025
- Double Rooms (14m<sup>2</sup>) : from 5 Sep – 21 Sep 2025
- Twin Rooms (14m<sup>2</sup>) : from 11 Sep – 21 Sep 2025

**BOOKING DEADLINE: 8 Jul 2025**



### Facilities:

- Laundry Facilities, Restaurant, etc.

### Dining:

- Breakfast (Dining Hall) 06:30-09:00 (09:00-10:00: Coffee only)

### Parking (15:00-10:00 only)

- 3 parking lots
- Max. Height: 2.1m
- Parking Fee: 2,000 JPY / night (tax included, as of 21 Nov 2024)

**Check-in: 16:00**

**Check-out: 10:00**

Early Check-in	Before 16:00: 100% of one night
Late Check-out	After 10:00: 100% of one night

### Distances:

From / To	Distance (km)	Journey Time (min)
Tokyo International Airport	30	65-70
Narita International Airport	85	100-110
Competition Venue (by bus)	10	60
Competition Venue (by train)	10	30
Oi Central Seaside Training Venue (by train)	25	65
Tokyo University Training Venue (by train)	15	40



## TOYOKO INN TOKYO Ikebukuro KITA-GUCHI No.2 (Group B)



The hotel offers simple, clean and comfortable rooms. As a part of hotel chain, facilities and quality of services are standardized. Located within 4-minute walk from JR Ikebukuro Station. Free WIFI is available in all rooms and lobby. Hotel facilities include microwave, laundry room, etc.  
In honor of the surrounding area as "Ikebukuro Chinatown", the hotel's breakfast even offers Chinese cuisine.

### Hotel Capacity:

Single Rooms: 271, Double / Twin Rooms: 100, **Total: 371 rooms**

### Room Types Available for Media:

- Single Rooms (9-9.36㎡) : from 5 Sep – 21 Sep 2025
- Double Rooms (9.48-13.52㎡) : from 5 Sep – 21 Sep 2025
- Twin Rooms (13-13.19㎡) : from 11 Sep – 21 Sep 2025

**BOOKING DEADLINE: 8 Jul 2025**

### Facilities:

- Laundry Facilities, Restaurant, etc.

### Dining:

- Breakfast (Dining Hall) 06:30-09:00 (09:00-10:00: Coffee only)

### Parking (15:00-10:00 only \*Booking required)

- 7 parking lots
- Max. Height: 2.1m
- Parking Fee: 2,000 JPY / night (tax included, as of 21 Nov 2024)

**Check-in: 16:00**

**Check-out: 10:00**

Early Check-in	Before 16:00: 100% of one night
Late Check-out	After 10:00: 100% of one night

### Distances:

From / To	Distance (km)	Journey Time (min)
Tokyo International Airport	30	65-70
Narita International Airport	85	100-110
Competition Venue (by bus)	10	60
Competition Venue (by train)	10	30
Oi Central Seaside Training Venue (by train)	25	65
Tokyo University Training Venue (by train)	15	40