

Tokyo 2020 Kagoshima Camp Guide

- Osumi Track and Field Training Facilities in Osaki town -



Contents

1 Overview of Kagoshima Prefecture

1-1 Location P 3

1-2 Transportation Access P 4

1-3 Climate P 5

1-4 Nature & Culture P 6

1-5 Food P 7



2 Sports Camps
Accommodation Records P 8,9

3 Osumi Track and Field Training Facilities (Temporary name)

3-1 Overview of facilities P 10

3-2 The details of facilities P 11



1-1 Overview of Kagoshima Prefecture (Location)

Kagoshima Prefecture is located southwest of mainland Japan. Covering 600 km from north to south and surrounded by the Pacific Ocean and East China Sea, Kagoshima ranks as the 10th largest prefecture with an area of 9,188 km² and 2,643 km of coastline.

In addition to being one of the nation's leading tourism areas, Kagoshima is an ideal environment to arrange sports camps with “authentic resources” such as Kagoshima “Black” Wagyu beef, Kagoshima “Black” Berkshire pork, numerous hot springs, and, of course, sports facilities and accommodation facilities. As a result, we are making proactive efforts to compete for the right to host camps, particularly to offer training camps for baseball, soccer, track and field, and other sports.

Our prefecture will make every effort to give a warm welcome to all athletes and show our “spirit of hospitality”, so please select “Kagoshima Prefecture” and our camp grounds for training!



1-2 Overview of Kagoshima Prefecture (Transportation and Access)

世界から鹿児島へのアクセス

World Access to Kagoshima

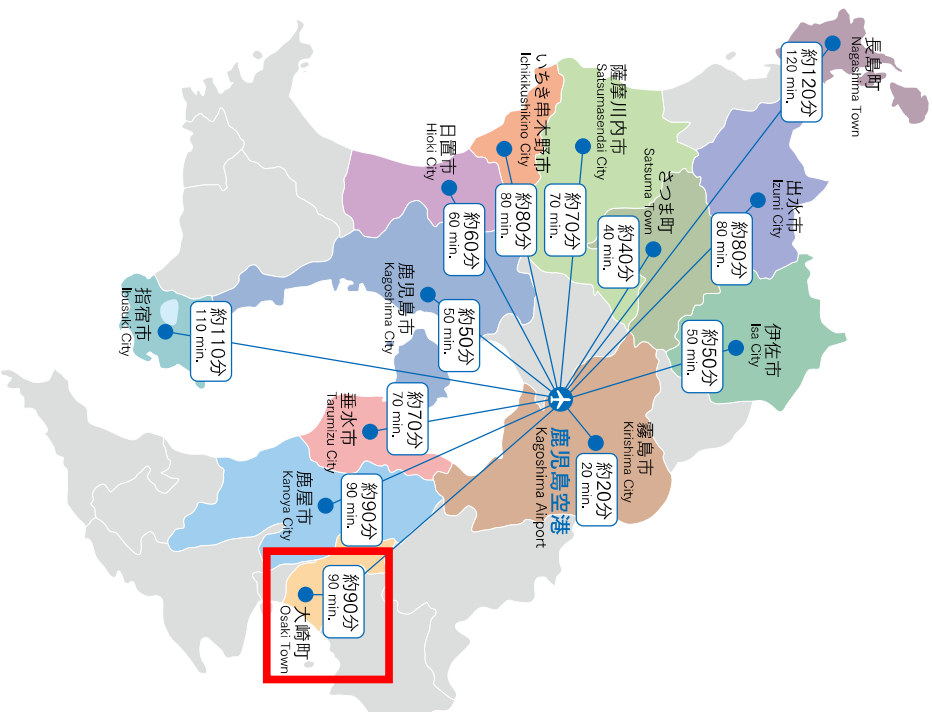
鹿児島空港は、国内の主要国際空港に加えて、アジアの4都市（ソウル、上海、台北、香港）と直行便で結ばれており、良好なアクセス環境が整っています。

Kagoshima Airport is located in an accessible environment with direct flights to major domestic airports as well as major international airports in four Asian cities (Seoul, Shanghai, Taipei, Hong Kong).



鹿児島空港からの所要時間(自動車)

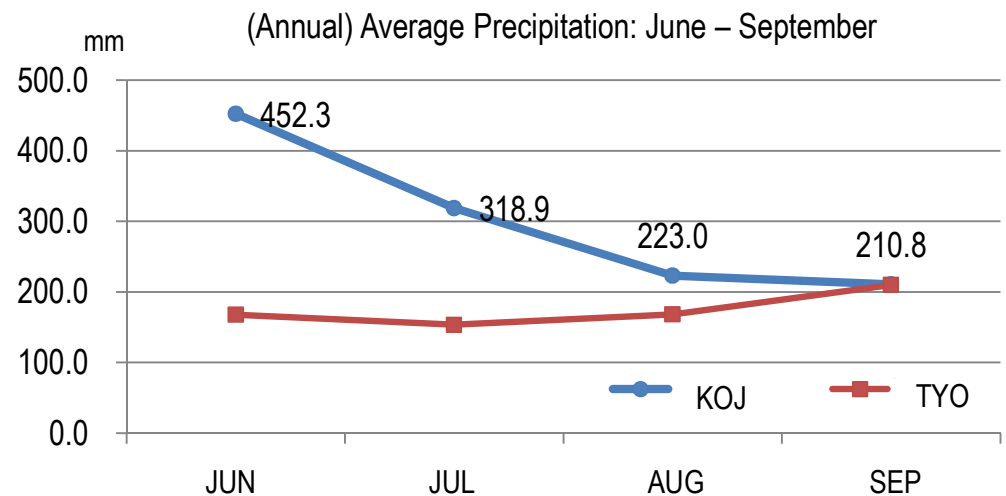
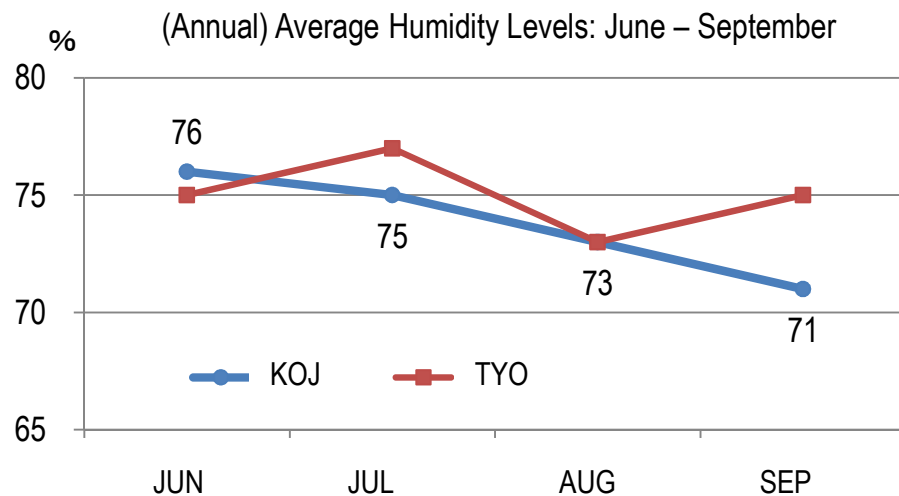
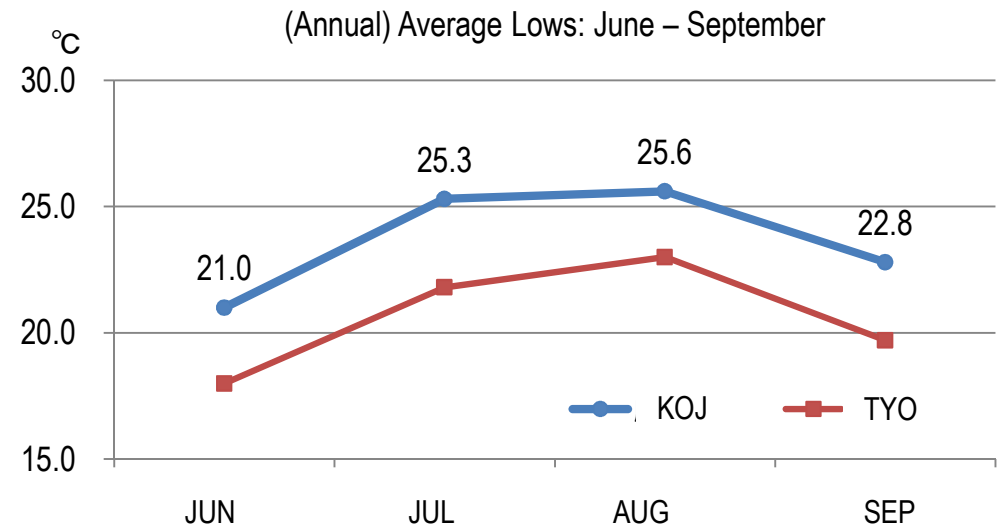
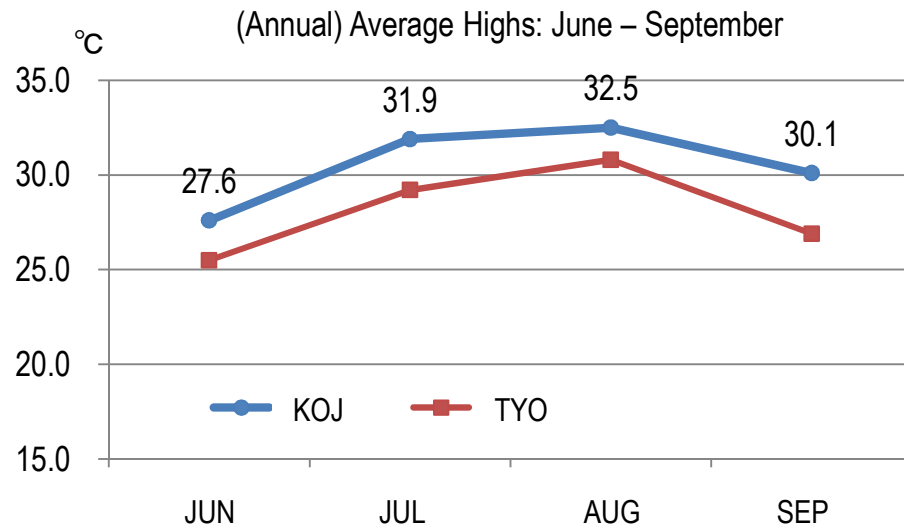
Time from Kagoshima Airport (Car)



航空機		
Flights		
ソウル(仁川)	約90分	鹿児島空港 Kagoshima Airport
Seoul (Incheon Int'l Airport)	90 min.	
上海(浦東)	約100分	
Shanghai (Pudong Int'l Airport)	100 min.	
台北(桃園)	約2時間	
Taipei (Taiwan Taoyuan Int'l Airport)	2 hrs.	鹿児島空港 Kagoshima Airport
香港(香港)	約3時間	
Hong Kong (Hong Kong Int'l Airport)	3 hrs.	
東京国際空港(羽田)	約110分	
Tokyo (Haneda Airport)	110 min.	
成田国際空港	約2時間	奄美空港 Amami Airport
Narita Int'l Airport	2 hrs.	
中部国際空港	約80分	
Chubu Centair Int'l Airport	80 min.	
関西国際空港	約70分	
Kansai Int'l Airport	70 min.	種子島空港 Tanegashima Airport
福岡空港	約50分	
Fukuoka Airport	50 min.	
鹿児島空港	約65分	
Kagoshima Airport	65 min.	
鹿児島空港	約40分	鹿児島中央駅 Kagoshima Chuo Station
Kagoshima Airport	40 min.	
新幹線		
Shinkansen Bullet Train		
新大阪駅	最速3時間44分 (Express) 3 hrs. 44 min.	
Shin-Osaka Station		鹿児島中央駅 Kagoshima Chuo Station
博多駅	最速1時間17分 (Express) 1 hr. 17 min.	
Hakata Station		
自動車		
Car		
福岡IC	約33分	鹿児島IC Kagoshima IC

1-3 Overview of Kagoshima Prefecture (Climate)

The climate of Kagoshima Prefecture ranges from temperate to sub-tropical temperatures, and the annual average temperature is 18.9 °C-making for an climate easy to live in throughout the year.



1-4 Overview of Kagoshima Prefecture (Nature & Culture)

Kagoshima Prefecture is home to the nation's first registered UNESCO World Natural Heritage site, Yakushima Island, and first National Park, Kirishima-Kinkowan National Park. The region is also blessed with a boldly multi-colored, rich natural environment with places like the volcano sitting in Kagoshima Bay, Sakurajima, the natural steam sand baths of Ibusuki, and the beautiful coral reefs and rare flora and fauna of the Amami Islands.

Most recently, sites such as the “*Shuseikan*” (Former Industrial Complex) and “Seki-yoshi Sluice Gate” belonging to the serial inscription of “Sites of Japan's Meiji Industrial revolution: Kyushu-Yamaguchi and Related Areas” were registered as UNESCO World Cultural Heritage sites, “Sites of Japan's Meiji Industrial Revolution: Iron and Steel, Shipbuilding and Coal Mining”, on 8 July 2015, so there are also many modern industrial heritage sites that went on to be the foundation of Japan's modernization.



1-5 Overview of Kagoshima Prefecture (Food)

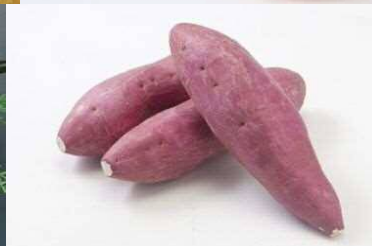
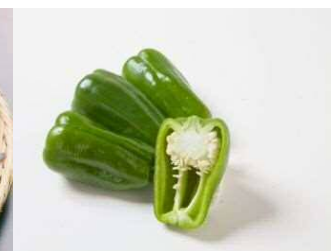
Kagoshima Prefecture produces a respectable amount of high-quality natural resources and agricultural and fishery products, and, with a strong food product industry integrating those sources, we play a role as a “food supply base” for our nation. Kagoshima Prefecture actually ranks 3rd in the nation for its agriculture output (2014, Ministry of Agriculture, Forestry and Fisheries), making us a leading agricultural prefecture.



World-renown Beef: Kagoshima “Kuro” Wagyu Beef



**The Taste We Want Everyone in the World to Experience:
Kagoshima “Kuro” Berkshire Pork**



2 Sport Camps Accommodation Records

Kagoshima Prefecture has accommodated various top class sport camps for domestic and international teams and varsity teams, professional soccer teams, professional baseball teams, etc.

1. Accommodated Domestic/International Varsity Teams

Competition Type	Country	Location	City	Area	# of Accomodations (YYYY)
Rugby Sevens	Japan (Men's)	Kagoshima - Kamoike Stadium, etc.	Kagoshima City	Kagoshima	7 (2013,2014,2015,2016)
Volleyball	Japan (Men's)	Sun Arena Sendai	Satsuma Sendai City	Hokusatsu	7 (2005, 2009, 2011, 2013, 2014, 2015,2016)
Volleyball	Japan (Women's)	Sun Arena Sendai	Satsuma Sendai City	Hokusatsu	8 (2003, 2009, 2010, 2011, 2013, 2014, 2015)
Volleyball	Serbia (Women's)	Sun Arena Sendai	Satsuma Sendai City	Hokusatsu	1 (2013)
Badminton	S. Korea (Men's and Women's)	Naze Athletic Park, etc.	Amami City	Oshima	1 (2015)
Track & Field	Japan (Women's sprint)	Ijuin Athletic Park	Hioki City	Kagoshima	1 (2013,2014,2015)
Track & Field	Taiwan	National Institute of Fitness and Sports in Kanoya	Kanoya City	Osumi	1 (2016)

※Professional teams (Japan, S. Korea, P.R China) and varsity teams (Japan, France) have also been accommodated in Ibusuki City (Nansatsu Area) at private facilities (lodging and soccer grounds combined).

2 Sport Camps Accommodation Records

2. Accommodated Domestic/International Professional Sports Teams

Competition Type	Group Classification	2016	2015	2014	2013	2012
Soccer	Domestic	12	14	13	14	11
	International	4	2	1	2	3
Baseball	Domestic	2	2	2	2	2
	International	3	4	2	4	4
Total (# of Teams)		21	22	18	22	20

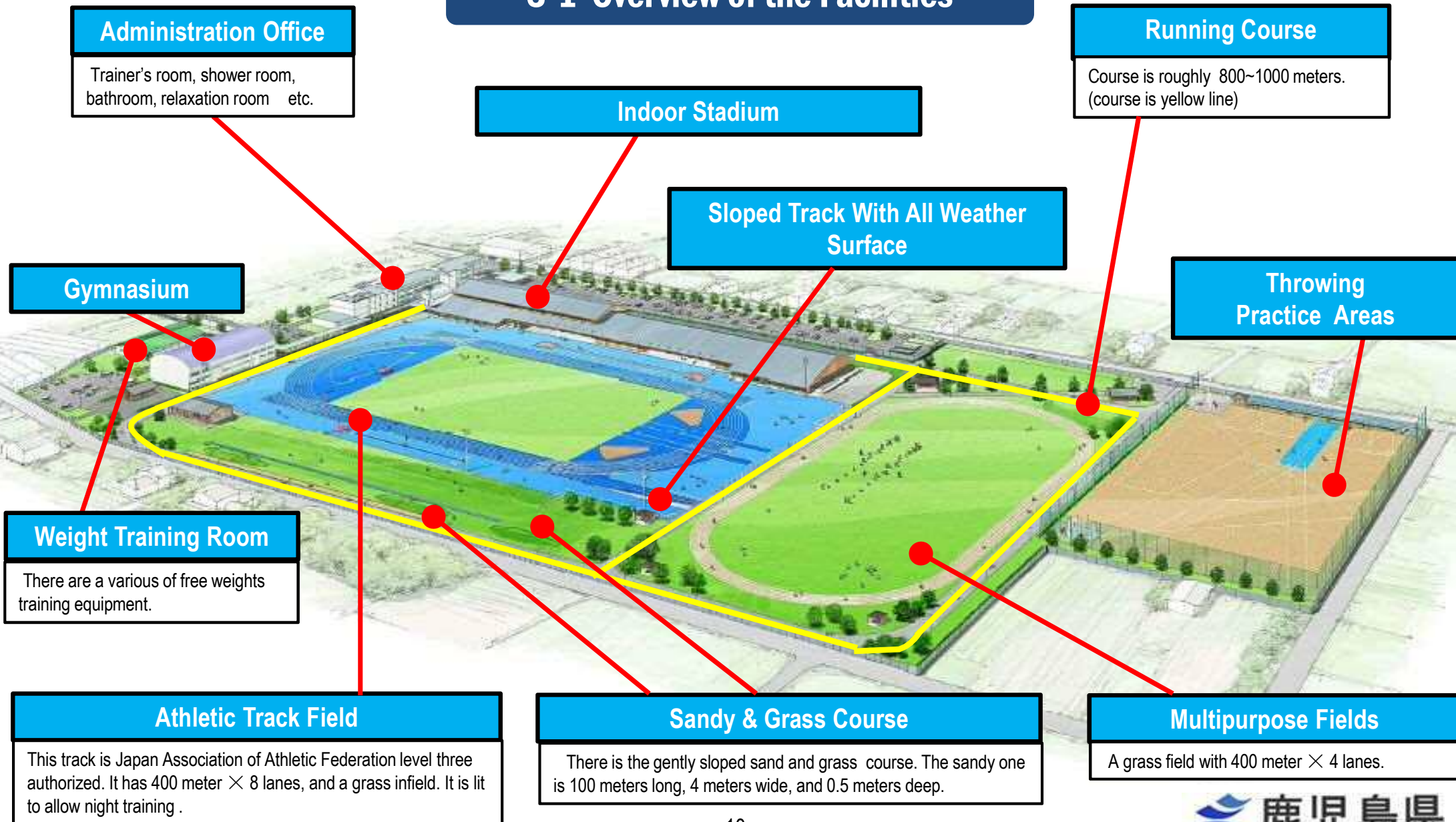
3. Accommodated Domestic/International Track & Field Teams

Group Classification	2016	2015	2014	2013	2012
Domestic	121	109	107	93	92
International	1 *	1 **	0	0	0

* Taiwan ** Samson track & field team

3 Osumi Track and Field Training Facilities (Temporary name)


3-1 Overview of the Facilities



3 Osumi Track and Field Training Facilities (Temporary name)

Indoor Stadium

3-2 The details of facilities

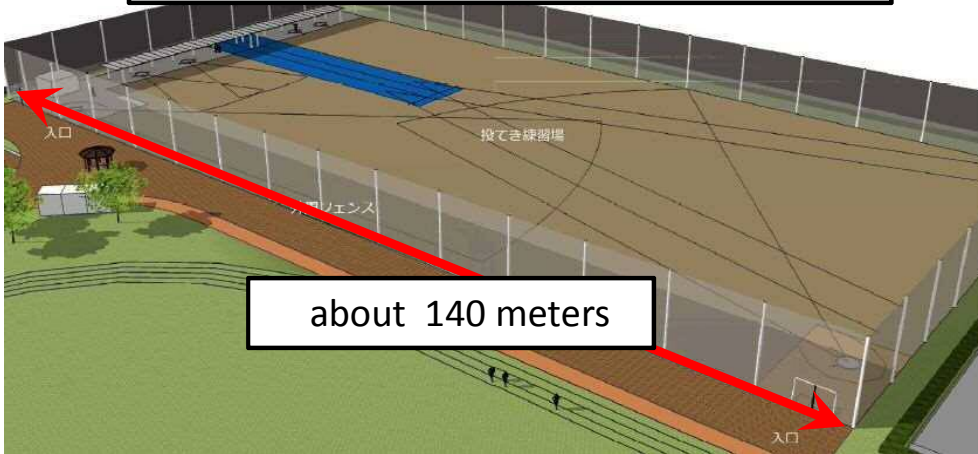


Six 150 meter lanes with all-weather surfacing and air conditioning are the longest in Japan.

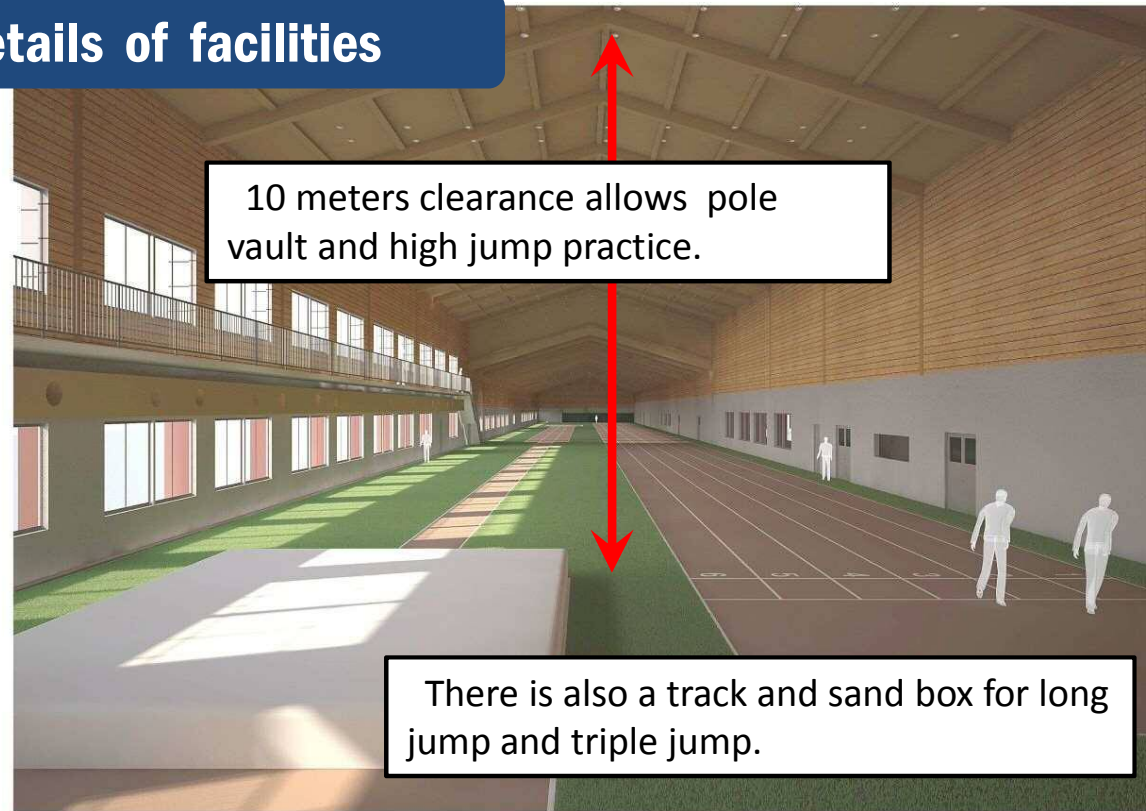
Throwing Practice Areas

Several athletes can train at the same time.

There are areas for shot -put, javelin, discus, and hammer throw.



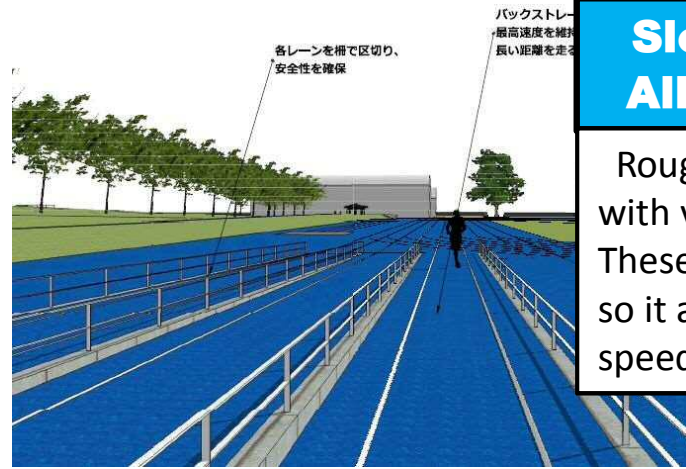
about 140 meters



10 meters clearance allows pole vault and high jump practice.

There is also a track and sand box for long jump and triple jump.

Sloped Tracks With All Weather Surface



Roughly 40 meter × 3 lanes with various degrees of slope. These are linked with the track, so it allows for maximum speed training.