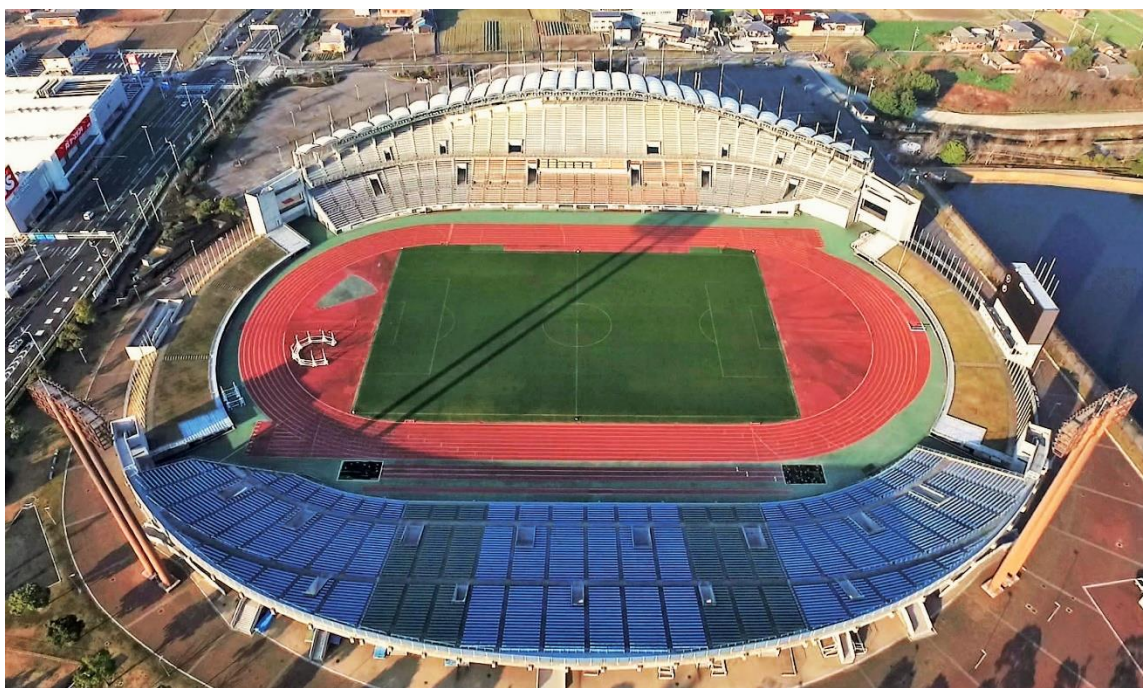


# Kagawa Prefectural Marugame Stadium

~A Distinguished Japanese Venue  
for Pre- Tokyo 2020 Training~



**Kagawa Prefectural Marugame Stadium** is **JAAF Class 1** certificated stadium equipped with full training facilities and auxiliary fields.

Kagawa Prefecture has held many counties' training camps for international tournaments and is used to training-camp management, which can offer you overwhelming pre-camps by hospitable supports.

Exchange Promotion Division, Exchange Promotion Department, Kagawa Prefectural Government  
Health and Physical Education Division, Board of Education, Kagawa Prefectural Government

# Kagawa Prefectural Marugame Stadium

## 1 Kagawa Prefectural Marugame Stadium Outline



### ( 1 ) Main Stadium

- JAAF-Certification : Class 1 certification
- Track : 400m×9 lanes (Surface : LEOTAN α EMOSS)
- Field : 106m×69.5m (Natural lawn)
- Throwing events : Available
- Rain Track : 120m×5 lanes (straight track 100m×3 lanes)  
2 Long jump, Triple jump pit (20m)
- Night Lightning : All-around light 1,500Lx



#### ○Training Room

##### < Aerobic-exercise equipment >

- Aero bikex6    • Treadmillx4
- Aero Climbx2

##### < Anaerobic-exercise equipment >

- Power Maxx2

##### < Stuck-Weight training equipment >      ※Maker : Cybex

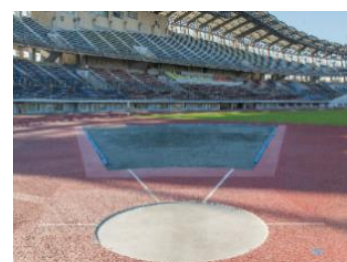
- Overhead Press    • Seated Leg Press    • Chest Press    • Prone Leg Curl    • Fly
- Leg Extension    • Pull Over    • Hip Adduction    • Pull Down    • Hip Abduction
- Low/Rear Delt    • Multi Hip    • Abcranch    • Rotary Calf    • Back Extension
- Arm Curl    • Rotary Torso    • Modular Assist Dip/Chin

#### ○Other Facilities

- Medical office    • Conference room    • Changing room
- Shower room    • Restroom (Western, Barrier free) , and more

※Ice bath : Available

- Opening hours : 9am – 9pm





## (2) Auxiliary Event Stadium

- JAAF Certification : All-weather Class 3 certification
- Track : 400m×6 lanes (Surface : LEOTAN α EMOSS)
- Throwing events : Available
- Opening hours : 9am~5pm



## (3) Previous Use of Kagawa Prefectural Marugame Stadium

- As the Site of Major Athletics Competitions
  - Japan Grand Prix Final Athletics Championships (1997)
  - All-Japan business group opposition Track and field Championships (2005)
  - 2010 Japan National Track and Field Championships and the 16th Asian Games Representative Athletes Selection (2010)
- As the Venue for Pre-Training Camps
  - World Championships in Athletics in Osaka (2007)  
Sweden, Denmark, Norway, Finland, Estonia, and more
  - Beijing Olympic Games (2008)  
Sweden, Denmark, Finland, Estonia, and more
  - World Championships in Athletics in Beijing (2015)  
Sweden, Denmark, Estonia



## 2 Running Course

### (1) Doki River

- Length : Approx. 15km
- Course Condition : Mostly maintained promenade
- Access : 15 min by walk to the closest point from hotel



### (2) Promenade around Kagawa Pref. Marugame Stadium

- Length : 2km a lap
- Course Condition : Mostly maintained promenade
- Access : Next to the Stadium

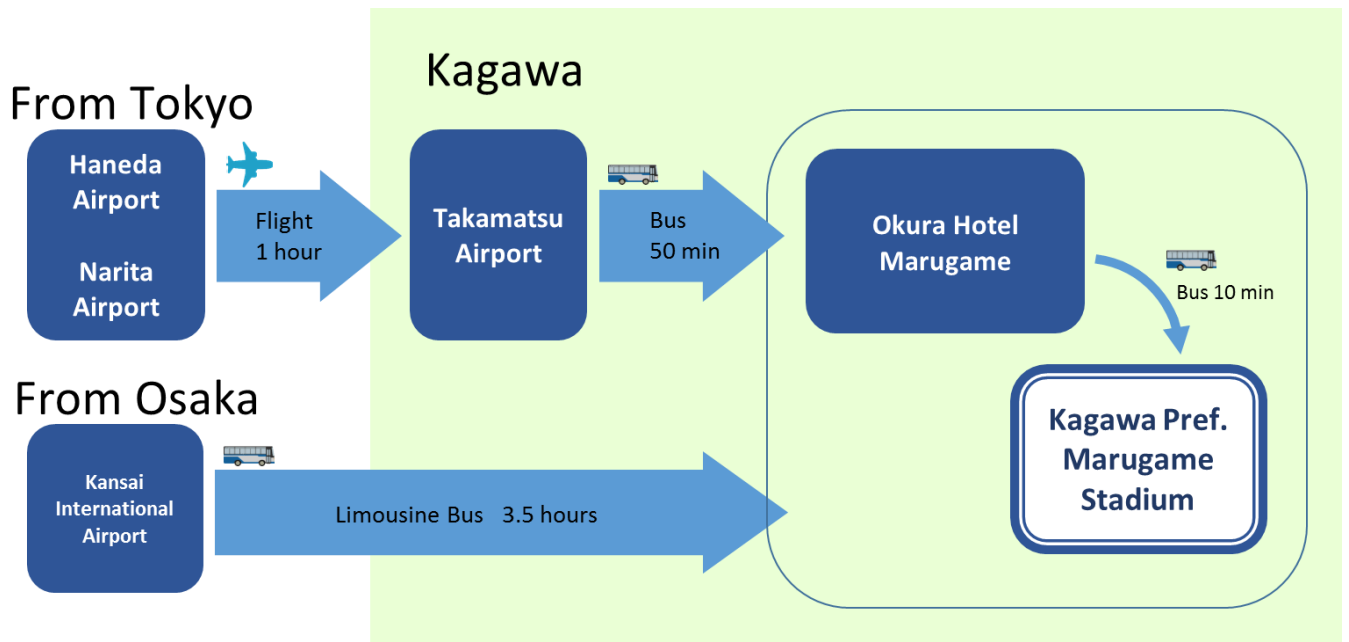
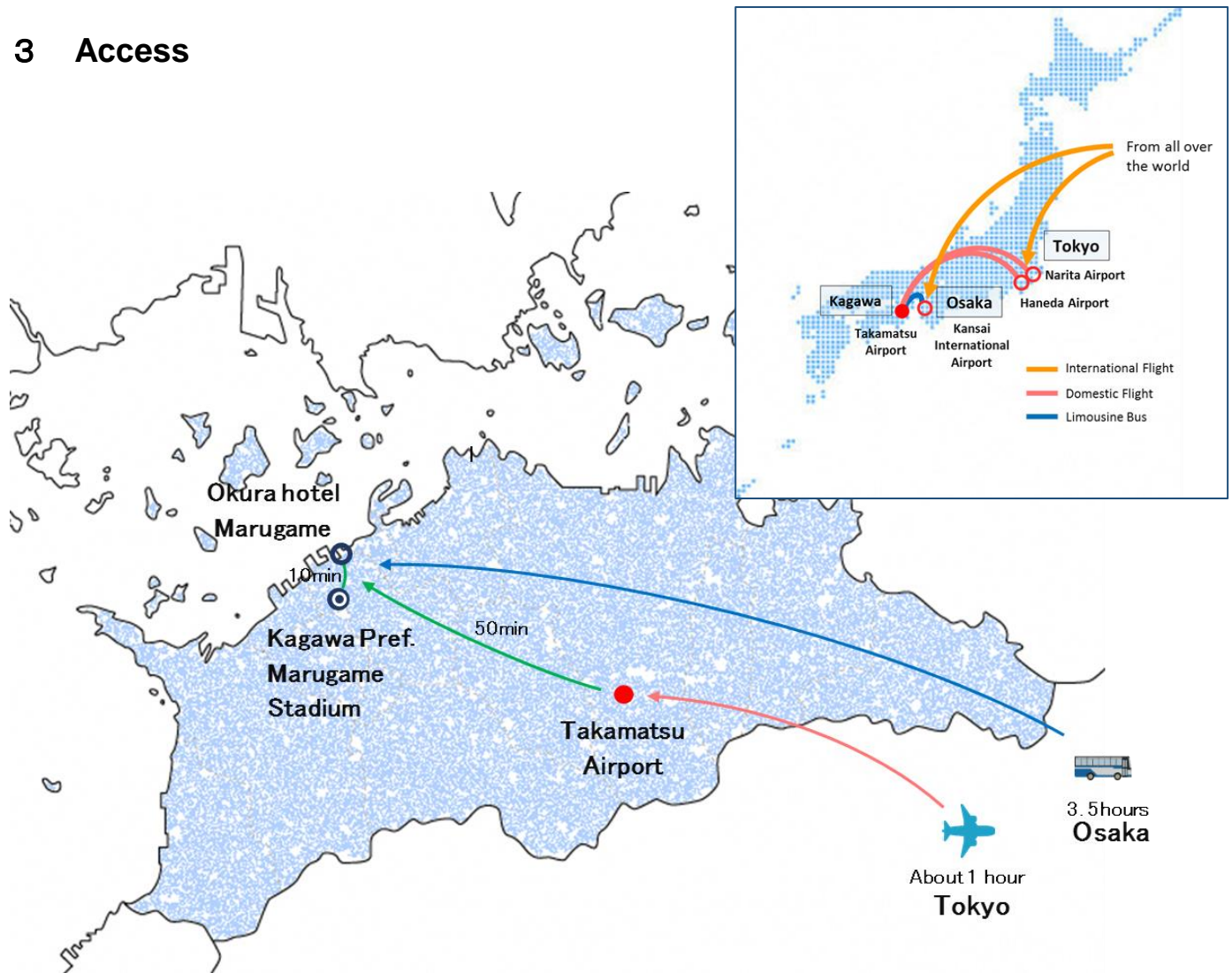


### (3) Marugame Municipal Comprehensive Athletic Park

- Length : 400m track
- Surface : En-tout-cas
- Access : 5 min by walk from Kagawa Pref. Marugame Stadium



### 3 Access





## 4 Pre-Training Camps in Kagawa Prefecture

### ( 1 ) Previous Pre-Training Camps

Stadium : Kagawa Prefectural Marugame Stadium (Athletics)

Lake Fuchu Canoe Course (Canoe, Rowing)

Accommodation : Okura Hotel Marugame

Event	Countries	Sport (Stadium)	Number of People
2007 World Championships in Athletics in Osaka	Sweden, Denmark, Norway, Finland, Estonia 4 others	Athletics (Kagawa Pref. Marugame Stadium)	154 in total (89 athletes 65 staff members)
2008 Beijing Olympics	Sweden, Denmark, Finland, Estonia, 2 others	Athletics (Kagawa Pref. Marugame Stadium) Canoe, Rowing (Lake Fuchu Canoe Course)	69 in total (36 athletes 33 staff members)
2015 World Championships in Athletics in Beijing	Sweden, Denmark, Estonia	Athletics (Kagawa Pref. Marugame Stadium)	36 in total (15 athletes 21 staff members)

### ( 2 ) Support

#### ① Personnel Support (Student Volunteers ・ volunteer interpreters, etc.)

When teams come for pre-training camps, many volunteers participate to provide support with interpretation, stadium Management, and more.

#### ② Medical Care

We prepared to provide emergency medical care in case of injury or other medical emergency that the team doctor is unable to address, in cooperation with hospitals that can provide care in English.

#### ③ Excursions and more

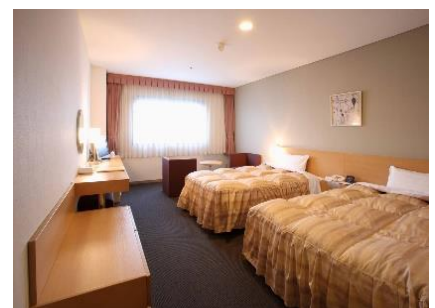
As part of showing our hospitality to the national teams and to help the athletes to relax, we can plan a variety of different short trips and tours. The options include experiencing local history and traditional culture, going for swims in the beautiful waters of Seto Island Sea, facilitating interactions and cultural exchange with local residents, and more.



## 5 Accommodation and Areas of Interest

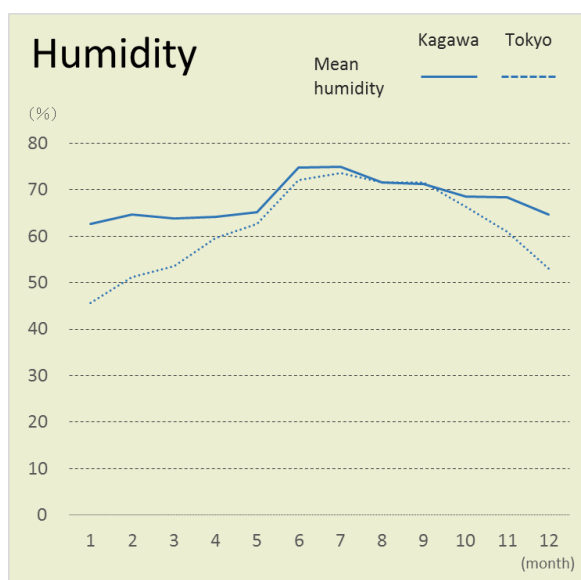
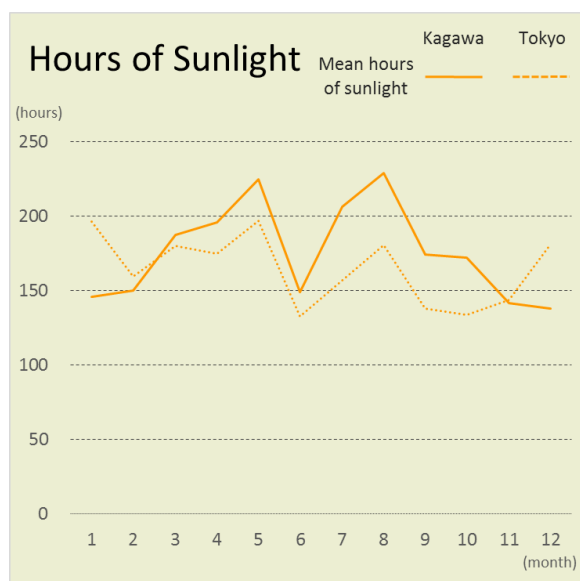
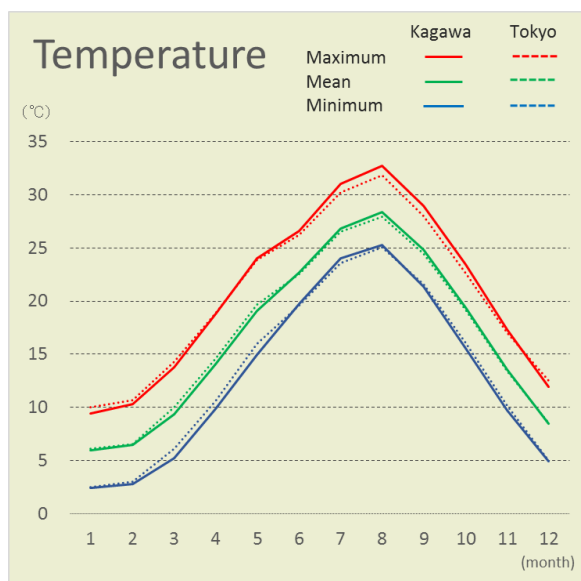
Hotel Name	Transportation Time from the Stadium	Transportation Time from Takamatsu Airport	Number of Rooms	Rate (Example of the past camp)	Other Facilities
<b>Okura Hotel Marugame</b>	10 min by car	50 min by car	80 single rooms 168 twin rooms	13,000 yen/day (3 meals) ※Negotiable	2 laundromat Free Wi-Fi

- Meals :
  - Exclusive use of large conference room that can accommodate 300 at maximum during a camp
  - 3 meals a day with buffet style
  - Nutritionists of your federation can be involved to decide menu
- Transportation from hotel to stadium : Free hotel's shuttle bus
- Areas of interest (transportation time from hotel)
  - Marugame Boat Racing (2 min by walk)
  - Marugame Genichiro Inokuma Museum of Contemporary Art (5 min by car)
  - Aeon Mall Utazu (Shopping, Movie) (5 min by car)
  - Marugame Castle (10 min by car)
  - Kotohira-gu Shrine (40min by car)
- ※Free rental cycle





## 6 Climate Data



Come and Visit the Facilities.  
See you in Kagawa!



#### [Contact]

Exchange Promotion Department, Kagawa Prefectural Government

4-1-10, Bancho, Takamatsu, Kagawa Prefecture

TEL: +81-87-832-3055

E-mail: [kouryu@pref.kagawa.lg.jp](mailto:kouryu@pref.kagawa.lg.jp)





The Best Place For  
Your Training Camp  
**KAGAWA**



**Kagawa Prefectural Government  
Exchange Promotion Division**

4-1-10, Bancho, Takamatsu, Kagawa, 760-8570, JAPAN  
Contact: [kouryu@pref.kagawa.lg.jp](mailto:kouryu@pref.kagawa.lg.jp)





Welcome to Kagawa,  
where affluent townscapes blend with  
beautiful natural scenery



An outstanding domestic track record for  
world-level competition pre-event training

**2007** Countries Participating in Kagawa's Training Camp for the World Championships in Athletics in Osaka

Nationality	Athletes	Staff	Total	Representative Athletes
Denmark	5	7	12	Y. Olsen
Egypt	2	—	2	O. El-Ghazaly
Estonia	1	—	1	G. Kanter
Finland	25	19	44	T. Pitkämäki
Iceland	1	1	2	T. Elisdottir
Mozambique	1	1	2	M. Mutola
Norway	19	10	29	A. Thorkildsen
Russia	3	2	5	Y. Isinbayeva T. Kotova
Sweden	32	25	57	C. Klüft S. Holm C. Olsson
Total	89	65	154	

**2008** Countries Participating in Kagawa's Training Camp for the Beijing Olympics

Nationality	Athletes	Canoe	Rowing	Total	Representative Athletes
Denmark	7 (3)			7 (3)	Y. Olsen
Egypt	1 (1)			1 (1)	O. El-Ghazaly
Estonia	4 (2)			4 (2)	G. Kanter
Finland	40 (19)	6 (4)	4 (3)	50 (26)	T. Pitkämäki M. Nieminen S. Sten
Iceland	6 (3)			6 (3)	A. Hjalmsdottir
Sweden	1 (1)			1 (1)	N. Arrhenius
Total	59 (29)	6 (4)	4 (3)	69 (36)	

※The number in parentheses ( ) is the number of athletes.

**2015** Countries Participating in Kagawa's Training Camp for the World Championships in Athletics in Beijing

Nationality	Athletes	Staff	Total	Representative Athletes
Denmark	3	3	6	S.S. Petersen
Estonia	3	3	6	G. Kanter
Sweden	9	15	24	K. Sagnia
Total	15	21	36	

## Greeting from the Governor



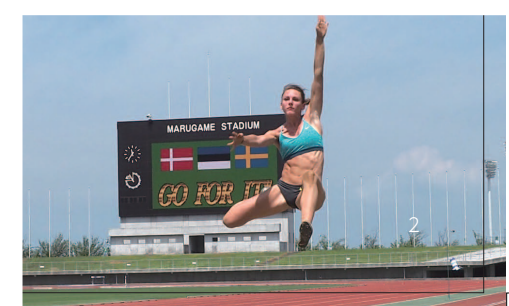
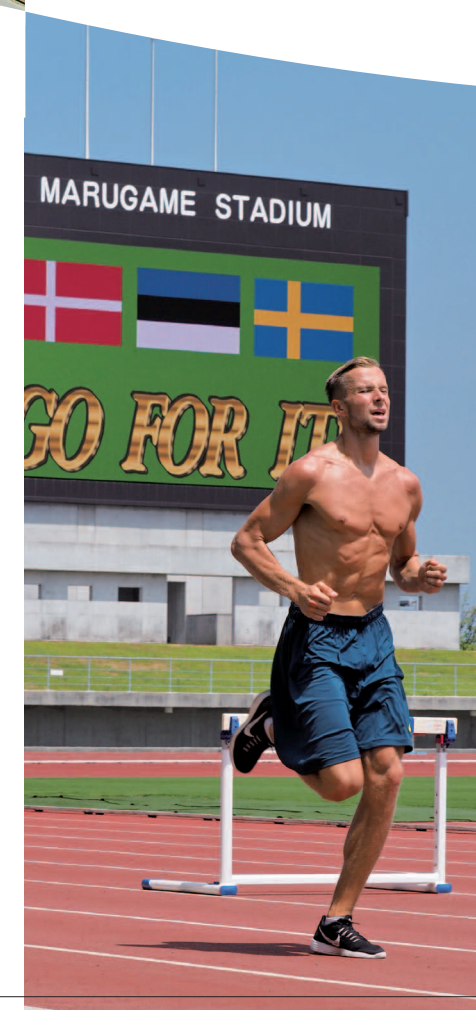
Governor of Kagawa Prefecture  
**Keizo Hamada**

*Keizo Hamada*

Kagawa is located in the north-eastern corner of Shikoku, one of the four main islands of the Japanese archipelago. Facing the Seto Inland Sea, which has been dubbed the “Jewel of the World”, Kagawa is blessed with a warm climate, few natural disasters, and an abundance of nature.

13 flights a day connect Takamatsu with Tokyo Haneda Airport with an additional 2 services running to Tokyo Narita Airport. With flights lasting approximately one hour, Takamatsu benefits from excellent transport links with the capital. (As of March 2016)

Up until now, Kagawa has held many training camps for international tournaments and we have received overwhelming praise from the members of various participating athletics teams. Athletes have stated that the training camp in Kagawa put them in a positive physical and mental state for their forthcoming events.





## One of Japan's exceptional sites for training camps



Main Stadium

### Pikara Stadium (Kagawa Prefectural Marugame Stadium)

#### Facility Specifications

##### 1 Main Stadium

- Athletic events available: Track & field events(for track events)etc.
- Lot area: 17,923㎡
- Track circumference: 400m
- No. of lanes: 9
- JAAF-certification: Class 1 certification
- Other: 120m x 5 lanes available under the stands during rainy weather

##### 2 Auxiliary Event Stadium

- Athletic events available: Track & field events (field events) etc.
- Track circumference: 400m
- No. of lanes: 6
- JAAF-certification: All-weather Class 3 certification

##### 3 Past Training Camps

- World Championships in Athletics 2007 in Osaka
- 2008 Beijing Olympics
- World Championships in Athletics 2015 in Beijing

##### 4 Events Hosted

- 2010 Japan National Track and Field Championships and the 16th Asian Games Representative Athlete Selection

#### General Description

Equipped with full training facilities and auxiliary fields, our JAAF Class 1 stadium provides a wonderful environment to run a training camp. We have hosted numerous country-wide sporting events as well as training camps for international track & field teams. This is also the home stadium for a J2 League soccer club and has played host to the national women's soccer team in camps and international games



Main Throwing Circle



Auxiliary Event Stadium



Training Gym



Tournament Race

### Lake Fuchu Canoe Course

#### 1 Facility Specifications

- Athletic events available: Canoe sprint
- No of. Lanes: 9
- Course width: 9m
- Course length: 1,000m
- Course water depth: 7m
- Other: Weight training facilities, clubhouse, etc.

#### 2 Training Camps Hosted

- 2008 Beijing Olympics

#### 3 Events Hosted

- Canoe Sprint International Participant Tryouts(2012-2015)

#### General Description

This location has received certification from the Japan Canoe Federation as an A-level course. We have hosted training camps and international tournaments for the Asian region, and we are one of the few locations to host national tournaments every year.

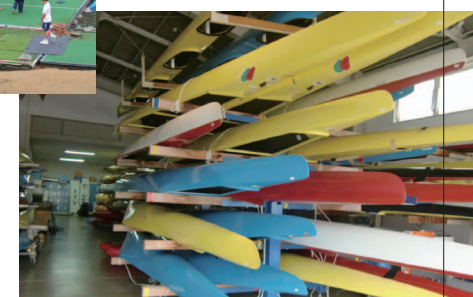
The surface of Lake Fuchu is flat all year-round and the lake itself is surrounded by nature making it the perfect location for training or conducting competitive events. Our on-site canoe training center is also equipped with Ergo machines for canoeing practice.



Practice Session



Docking Area



Warehouse





Stadium Grounds



Bullpen

## Shikoku Coca-Cola Bottling Stadium Marugame (Marugame Municipality Baseball Stadium)

### Facility Specifications

#### 1 The Grounds

- Center: 122m Wings: 100m Area: 12,800㎡
- Infield: Black dirt Outfield: Natural grass (overseeded)
- Foul territory: Artificial turf
- Night lighting: 6 pillars (Infield 1,500lx / Outfield 800lx or more)
- Scoreboard: LED full-color screen (16m x 6m)

#### 2 Seating

- Total accommodation: 10,000 people
- Main stands: 3,000 people Infield: 2,000 people
- Outfield: 5,000 people
- Right field: Picnic deck Left field: Grass lawn

#### 3 Main Facilities

- Indoor practice field, bullpen, training space, practice swing area, player locker room, showers, conference rooms, etc.

### General Description

In March 2015, a fully-official baseball stadium – suitable for professional matches – was opened in Marugame Sports Park. The outfield is natural grass overseeded with newly grown Tifton in summer, and strong ryegrass in winter, so that teams can play on green grass all year round.

For the mound and the batter's box a clay, similar to that of American ballparks, is used making it suitable for international matches.

Indoors, there are 6 bullpens and a practice field allowing teams to continue practice even during bad weather.

URL: <http://www.city.marugame.lg.jp/itwinfo/i25937/>



Concept Drawing

## Yashima Athletic Stadium\*

### Planned Facility Specifications

#### 1 Main Stadium

- Athletic events available: Track & field events, soccer, rugby, and more
- Building area: 16,207㎡ Track circumference: 400m
- No. of lanes: 8 lanes JAAF-certification: Class 2
- Other: Barrier-free access

#### 2 Indoor Event Space(below the stands)

- Official pole vault area Pole vault practice area
- Long jump / triple jump practice area
- Rain-weather track area

#### 3 Auxiliary Stadium

- Athletic events available: Track & field
- Track circumference: 200m No. of lanes: 6

### General Description

We are currently working on the Yashima Track & Field Stadium and plan to have it ready for operation by spring 2017. Giving ample consideration to barrier-free access, we are preparing it as a JAAF Class 2 track & field stadium so that everyone can enjoy using it safely and easily.

The stadium also features a certified indoor pole vault area and an all-weather practice field with the same curved running lanes as an outdoor track. In addition there are also natural grass fields suitable for rugby and soccer. These are linked to the outdoor track making it the first such facility in Japan and an ideal venue to conduct an athletics camp.

\*Tentative Name



Gymnasium # 1

## Takamatsu Gymnasium

### Facility Specifications

#### 1 Gymnasium #1 (54m×38m)

- No. of courts: Basketball 2, Volleyball 3, Badminton 12, Table Tennis 39 tables

#### 2 Other

- Gymnasium #2, Dojo #1, and Dojo#2 are adjacent.

### General Description

The Takamatsu City Gymnasium is a multi-purpose stadium which hosts international sporting events, all-Japan tournaments, and other types of athletic events.

URL: <http://www.taka-spo.or.jp/sou1.html>



Dojo # 2 (For Judo)



Bird's-eye view

## Kagawa Sports Park

### Facility Specifications

#### 1 Kagawa Prefectural Soccer / Rugby Field

- Area: 44m x 69m
- Courts: 1
- Court type: Natural grass

#### 2 Kagawa Prefectural No. 2 Soccer / Rugby Field

- Area: 120m x 69m
- Courts: 1
- Court type: Natural grass

#### 3 Kagawa Prefectural Tennis Courts

- Area: 13,920㎡
- Courts: 20
- Court type: Artificial grass
- Other: Outdoor courts



Soccer/Rugby Field # 1



Tennis Courts

### General Description

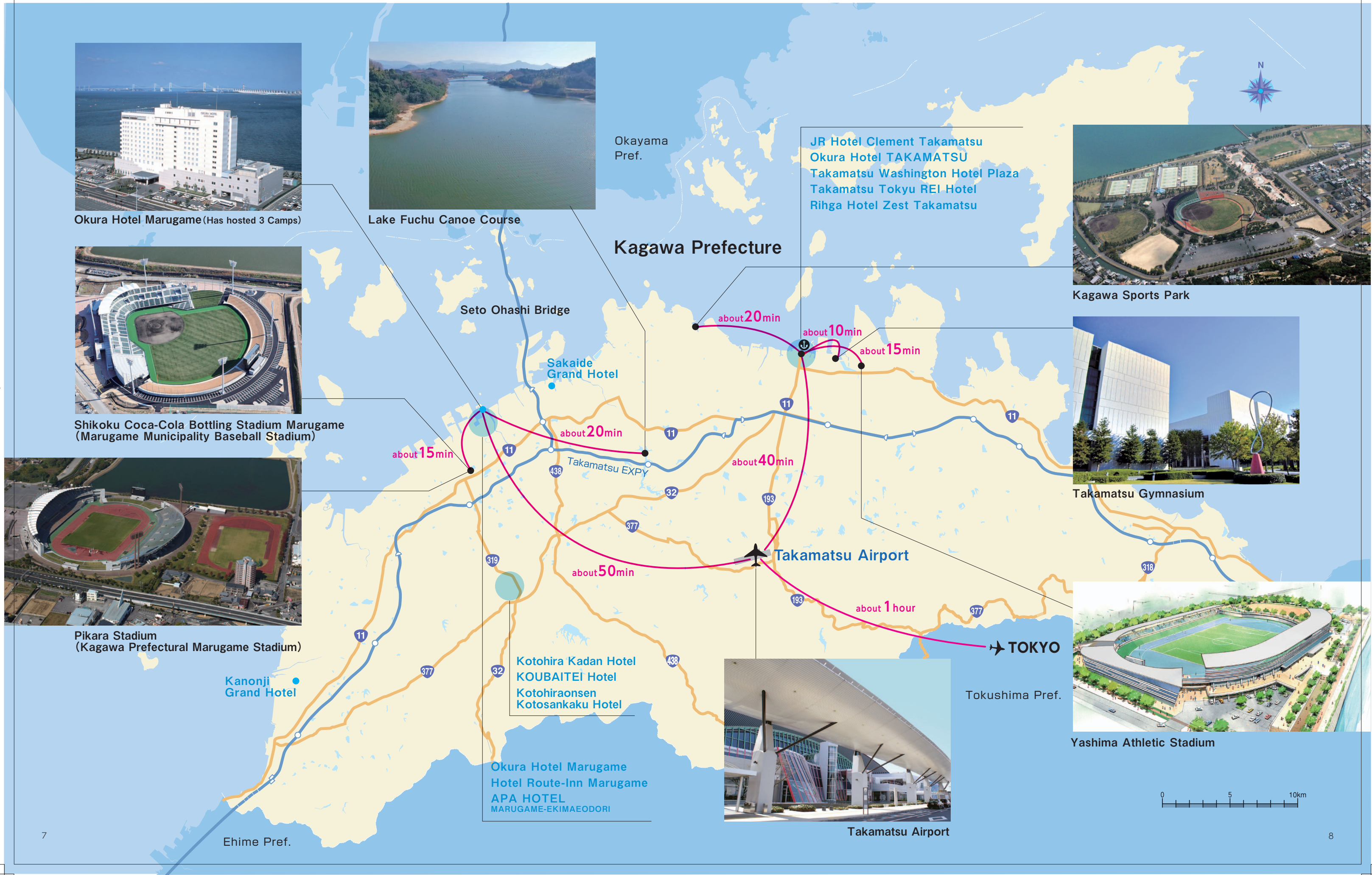
Kagawa Sports Park is a comprehensive sports complex with 2 baseball fields, 2 soccer fields, and 20 tennis courts, all encompassed by exquisite nature and flanked by the sea and mountains on either side.

Both soccer fields are natural grass fields, suitable for rugby as well as soccer. Also, they can be easily accessed from nearby the Takamatsu city, which features numerous hotels and accommodations.

URL: <http://www.ikushima-amz.com>



## A stress-free and easy access training camp environment





# Overview of Kagawa prefecture

## Comfortable access to major cities



## Transport Infrastructure

Kagawa has a long history as the "Gateway to Shikoku." In addition to the ten or so daily domestic flights between Kagawa and Tokyo, there are regular international routes operating between Kagawa and Korea-Inchon International, Shanghai Pudong International, and Taipei Taoyuan International airports. Additionally, the Seto Ohashi Bridge, connecting Honshu with Kagawa's Sakaide City, is one of the world's largest road-rail bridges at 13,100m in length providing stress-free access to Kagawa by bus or train from Kansai International Airport, the major airport of East Japan.

## National and internationally praised local foods

### Food Culture

Located alongside the Seto Inland Sea with its warm weather and quiet, yet fast flowing tides, Kagawa is richly blessed with a range of cuisine.

One type of local specialty, born from Kagawa's place as the cradle of olive cultivation in Japan, is "olive beef" and "olive yellowtail" – respectively produced by raising cows and yellowtail on a diet of specially-made feed mixed with local olives. This process results in highly popular meat with a rich umami flavor that is still light on the tongue.

Additionally, the vegetables and fruits of this warm climate are also raised with tender care by local farmers and have received great popularity.

In previous training camps held in Kagawa, we utilized these wonderful foods to their fullest and provided athlete-oriented meals to the delight of all members of each team.

We also make every effort to prepare meals appropriate for each person's country, upon consultation.



## Access Guide

Country of Departure	Domestic Flights		
	Tokyo International Airport (Haneda)	about 1 hour	13 return flights per day
	Narita International Airport	about 1 hour	1-2 return flights per day
	(Seoul, Korea)	about 1 hour 30min	3 return flights per week
	(Shanghai, China)	about 3 hours	4 return flights per week
	(Taipei, Taiwan)	about 3 hours 30min	4 return flights per week
	Bus		
	Kansai International Airport	about 3 hours 30min	
	Train		
	Kansai International Airport	about 3 hours	

Takamatsu Airport

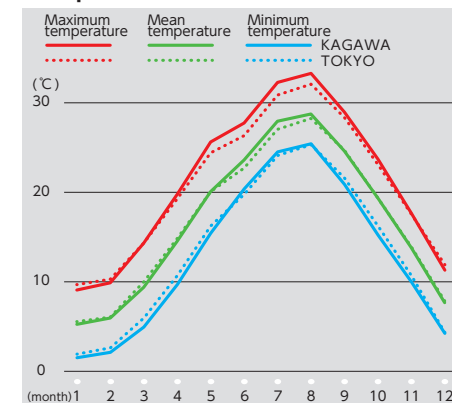
Takamatsu Station

## A low-rainfall Region

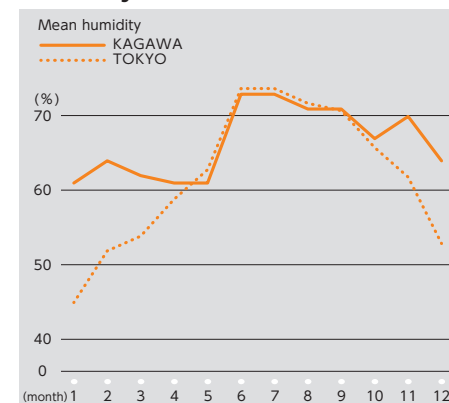
### Comparison of climate between Kagawa and Tokyo

Average values for the last five years (2011-2015)  
Source : Website of Japan Meteorological Agency

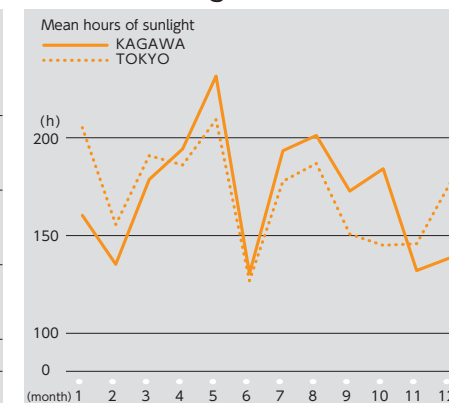
#### Temperature



#### Humidity



#### Hours of sunlight



## Plenty of sightseeing spots nearby to relieve you after training

### Sightseeing Spots

There are many places of historical interest in Kagawa, in addition to the graceful landscapes of the Sanuki Plains and the islands of the Seto Inland Sea.

Ritsurin Garden, which has been recognized by Japan as a Special Place of Scenic Beauty, has also been praised abroad, earning 3-stars in the Michelin Green Guide Japan, its highest rating.

Another popular sightseeing spot is Marugame Castle, which features Japan's tallest stone wall currently in existence. The exquisite curve it forms is lovingly called "Ougi no Kobai" which means the shape of a folding fan.

Kagawa is also home to historical sites that continue to maintain Japan's traditions even today, including Kotohiragu Shrine, where believers have come to pay homage to the god of the sea since ancient times, and the 88-temple pilgrimage route with the especially noteworthy Zentsuji Temple which dates back 1200 years.

